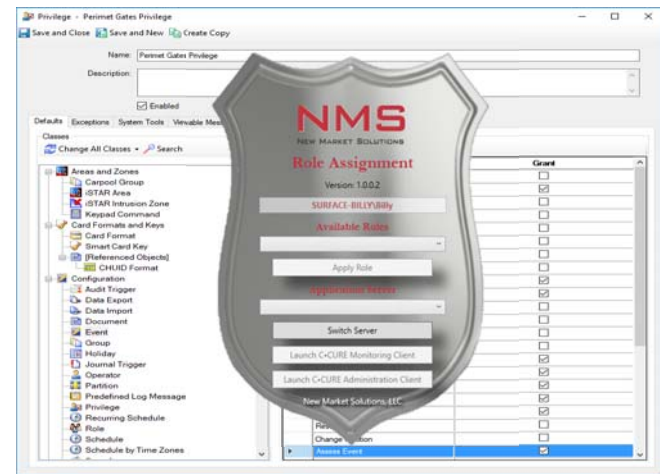


ROLE ASSIGNMENT FOR C-CURE 9000

For businesses with many operators who perform different jobs from day to day, the NMS Role Assignment application is a must-have.

It significantly reduces the time needed to correctly assign operators the privileges and layouts they need to effectively do their jobs.



- Create unlimited number of roles
- Easily define roles based on privileges and application layouts
- Significantly reduce time assigning operators to their correct jobs

Reduce Administrative Time and Error

Large companies often have dozens of operators who are assigned to different areas within their enterprise every day, or even during the same day.

The administration involved in setting up operator privileges can be time-consuming and prone to data entry error because of the myriad objects and layouts involved. For example, an operator may be assigned to monitor the loading docks on Monday until noon, and the perimeter gates until 5:00; and vice versa on Tuesdays.

NMS Role Assignment lets administrators define roles based on specific C-CURE classes and application layouts and assign them to operators quickly and easily.

Easily Add and Modify Roles

With NMS Role Assignment, you can create an unlimited number of roles, and simply assign them to the appropriate operators ... much more efficient than manually building and adjusting those settings each day.

When an operator logs on to a C-CURE 9000 client workstation, the NMS Role Assignment application allows him/her to select the specific role that has been assigned that day.

The operator is then automatically given the appropriate privileges in the specific application layout to most effectively do his/her job.



**IDEAL FOR CUSTOMERS WITH
MANY OPERATORS WITH
SHIFTING WORK AREAS**