

Role Assignment *for C-CURE 9000*

October 2015

Table of Contents

1.	Introduction	3
2.	Installing the NMS Role Assignment Server	3
3.	Installing the NMS Role Assignment Database on the SQL Server	9
4.	Installing the Role Assignment Application on the C•CURE Server.....	17
5.	Creating and Removing a Role.....	27
6.	Installing the Role Assignment Service on a C•CURE Client Workstation.....	32

Quick Tip

- Confirm your C•CURE version is compatible with this feature
- Make sure you have the correct licenses from the manufacturer

Please write your serial number for future reference (tech support, upgrades, etc.)

Date of Purchase:



1. Introduction

A “role” in C•CURE 9000 is a combination of privileges and application layouts authorized for that individual. After an individual logs onto a C•CURE 9000 client workstation, the NMS Role Assignment application allows an operator to select/change the specific Role he/she will perform, providing flexibility and time-savings when an operator’s role changes frequently.

This documents provides instructions for:

- Installing the NMS Role Assignment app on the C•CURE Server and SQL server
- Creating and/or Removing a Role
- Installing the NMS Role Assignment Service on a C•CURE client workstation
- Selecting a Role when logging onto a C•CURE client workstation

[Convention: Select = Left Mouse Click]

2. Installing the NMS Role Assignment Server

Download the “NMS Role Assignment Server Setup” program and double click on the desktop icon. When the program opens, the dialog box shown in Figure 1 is displayed.

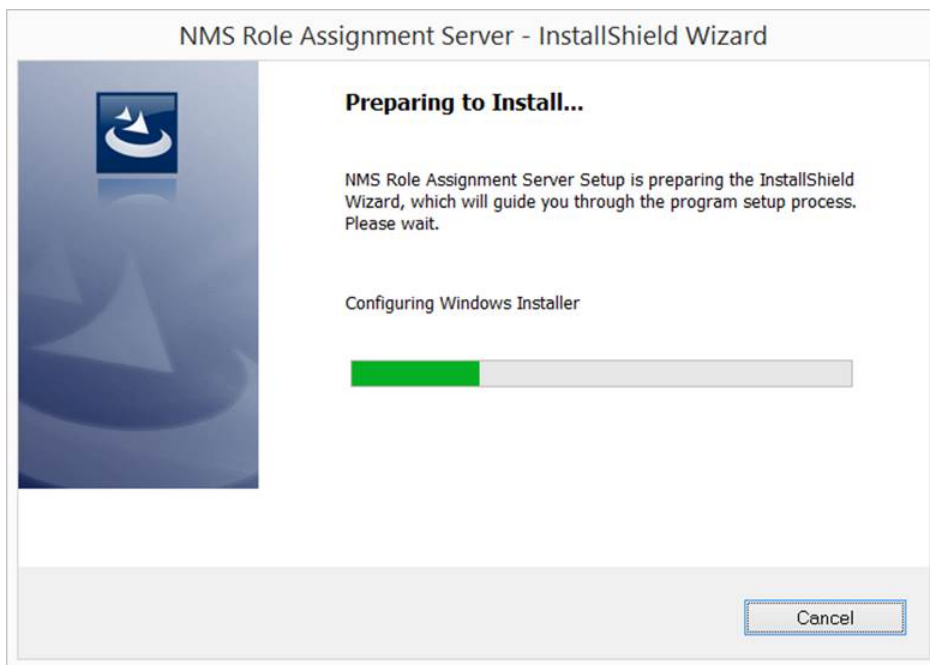


Figure 1

When the dialog box shown in Figure 2 is displayed, select "Next".

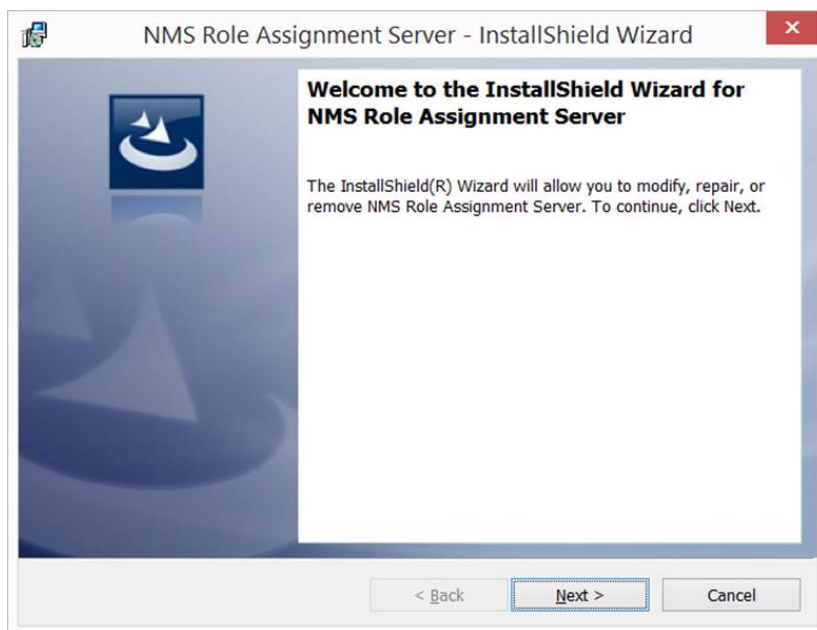


Figure 2

After reading the “End User License Agreement”, accept and select “Next” (Figure 3).

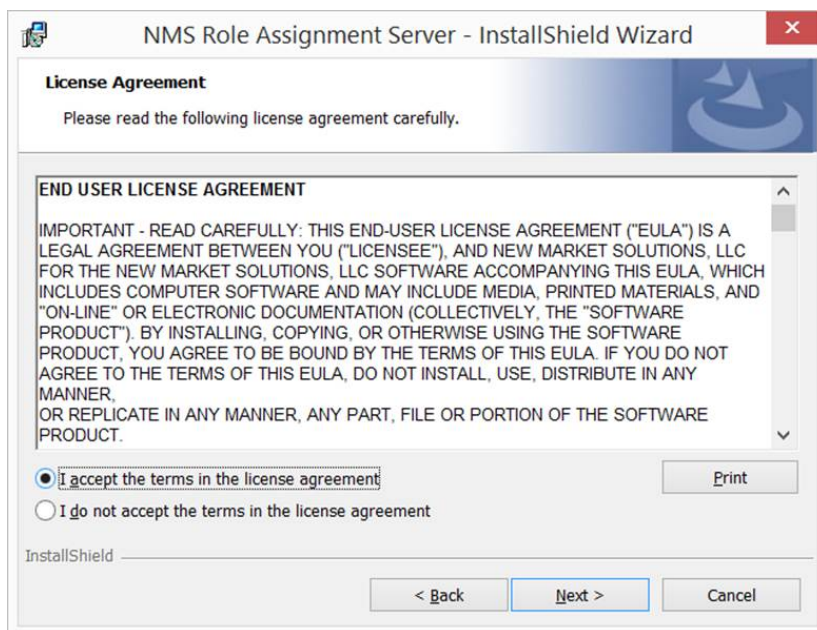


Figure 3

Select the “Destination Folder”, then select “Next” (Figure 4)

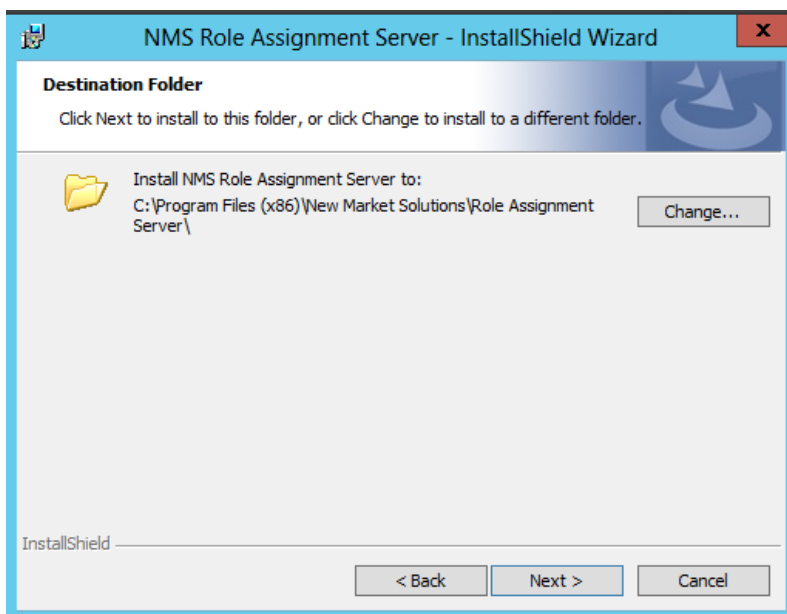


Figure 4

When the dialog box shown in Figure 5 is displayed, select “Install”.

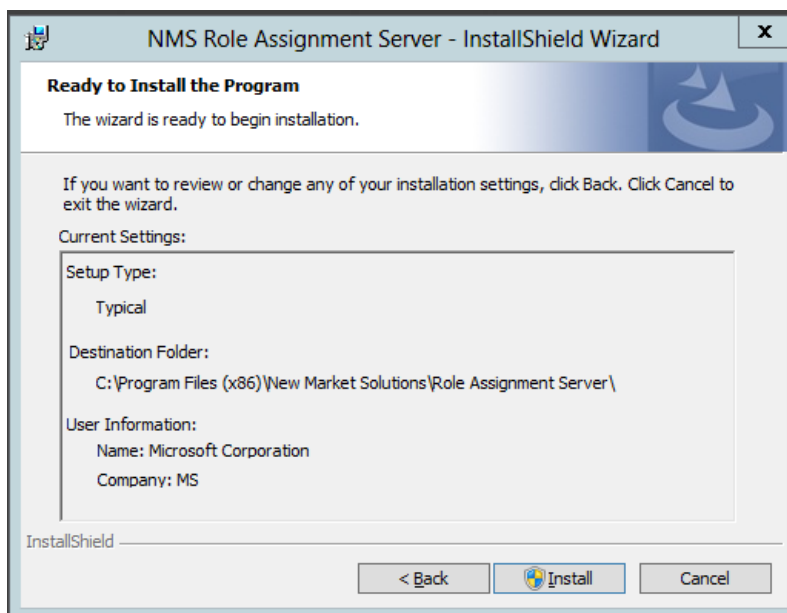


Figure 5

If the dialog box shown in Figure 6 is displayed, select “Yes”.

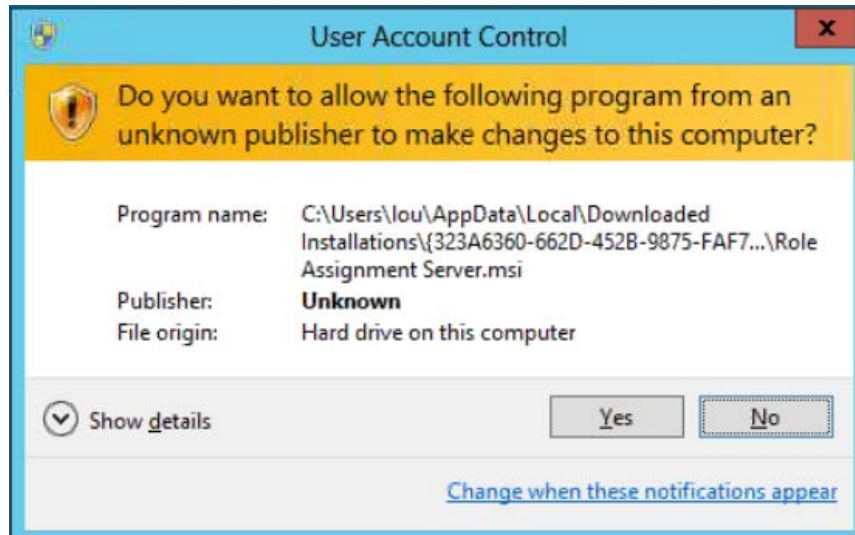


Figure 6

Select “Next” when all files are copied (Figure 7).

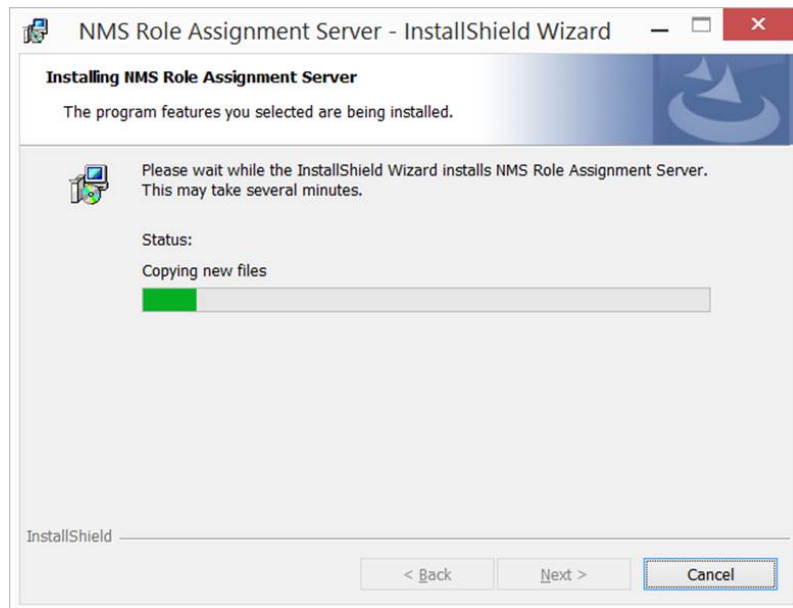


Figure 7

When the dialog box in Figure 8 is displayed, select “Finish”.

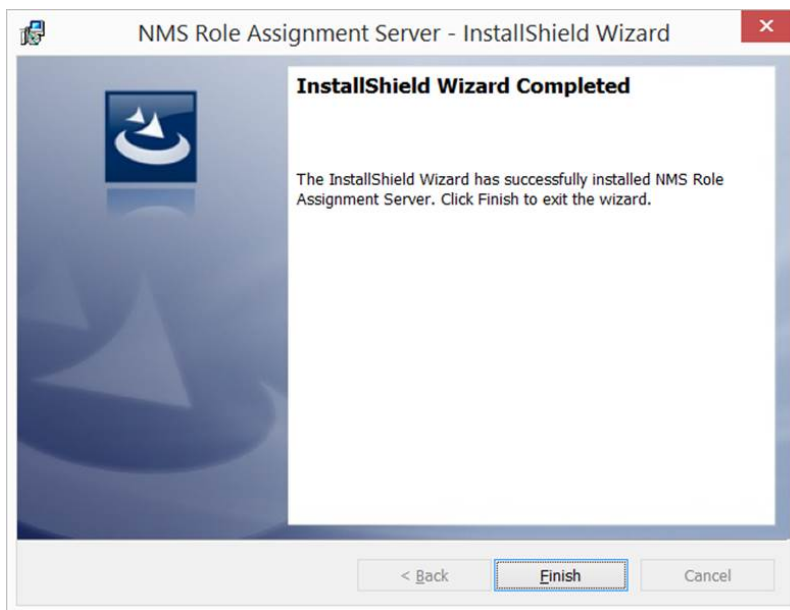


Figure 8

3. Installing the NMS Role Assignment Database on the SQL Server

Launch “SQL Server Management Studio” and select “Connect” when the dialog box in Figure 9 is displayed.

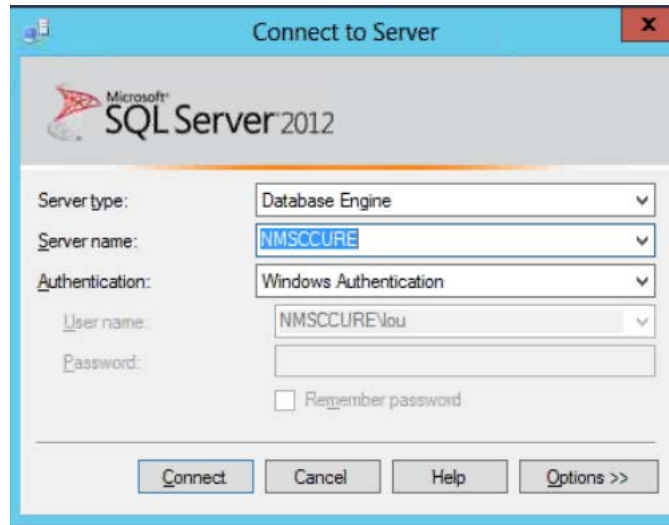


Figure 9

When the dialog box in Figure 10 is displayed, click on “Open File” in the Menu Bar and navigate to “[Drive Letter:]\Program Files (x86)\New Market Solutions\Role Assignment Server\Database”.

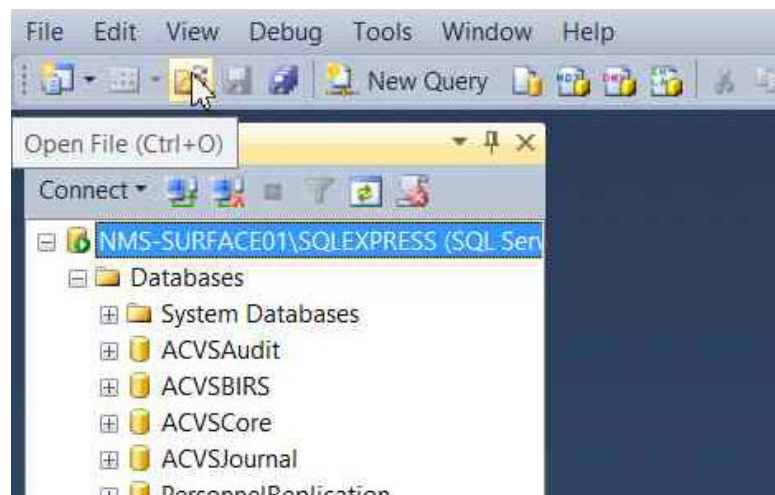


Figure 10

Click on “Role Assignment.sql,” then select “Open” (Figure 11).

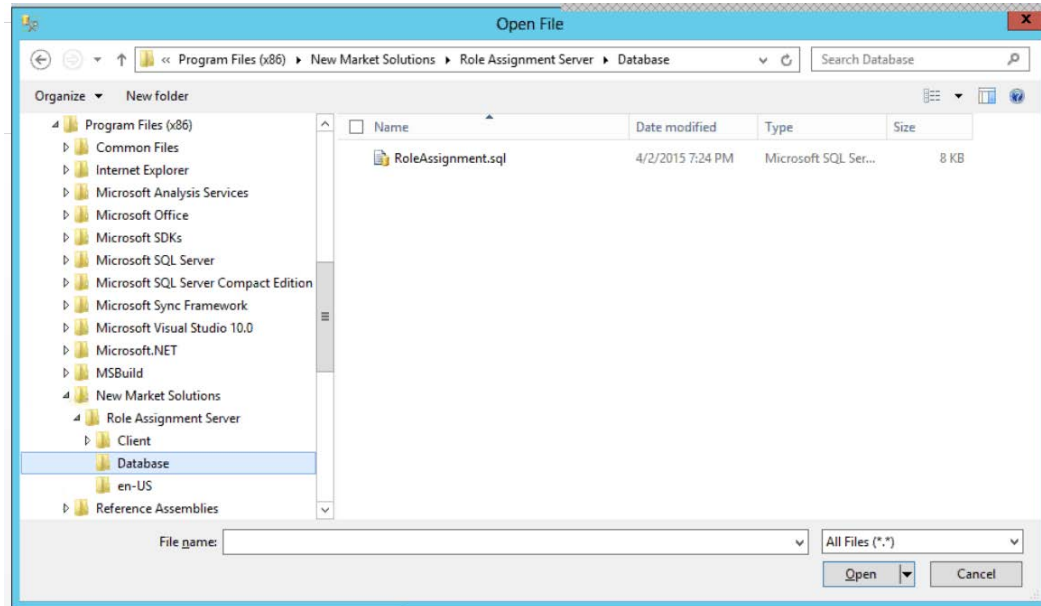


Figure 11

When the window in Figure 12 is displayed, select “Execute”.

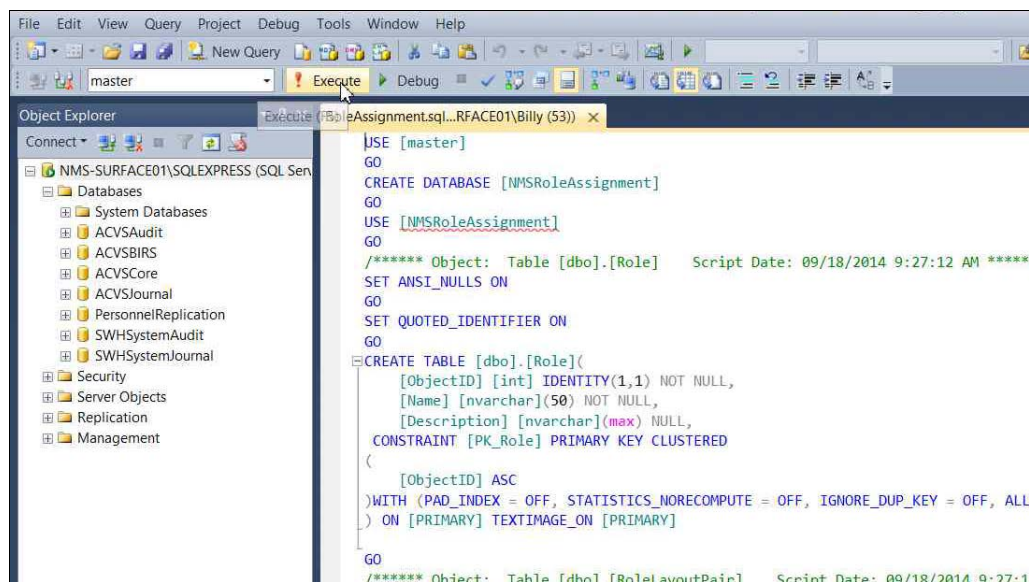


Figure 12

After the “Role Assignment Database” has been created, the window shown in Figure 13 will be displayed.

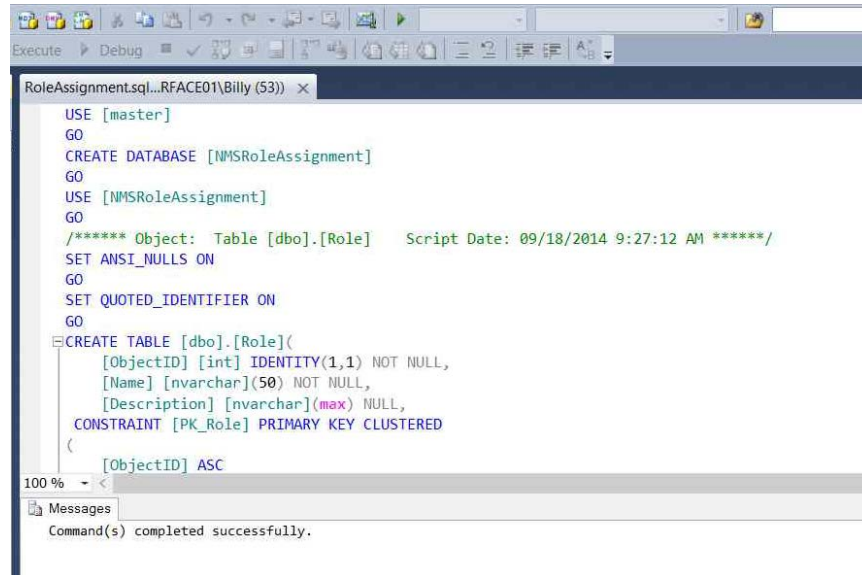


Figure 13

Open “File Explorer” and navigate to “Client,” then navigate to “wwwroot” (Figure 14).

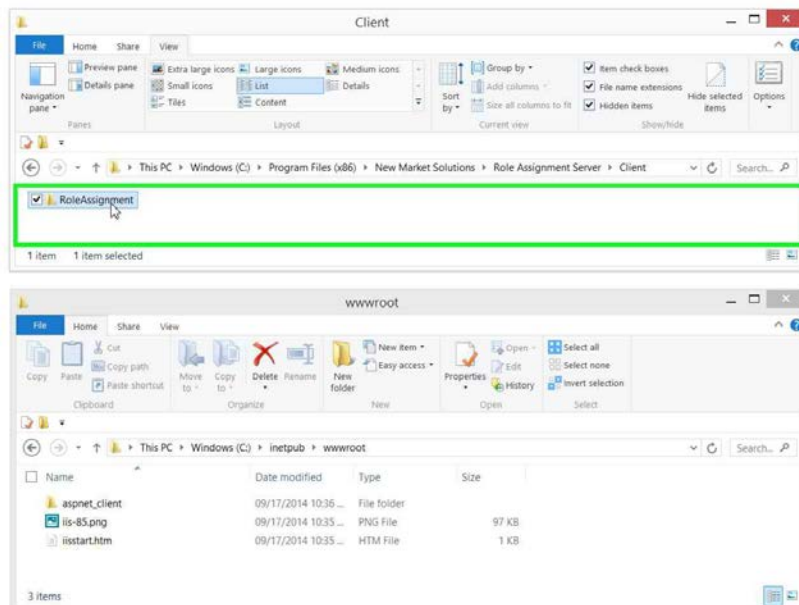


Figure 14

Select “Role Assignment” from the “Client” window and paste into the “wwwroot” window as shown in Figure 15.

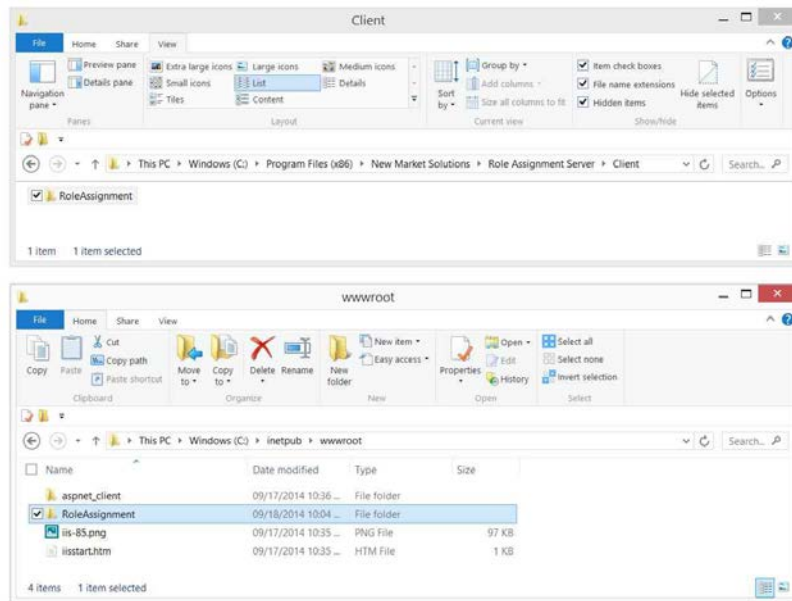


Figure 15

Quick Tip

- The location of ‘wwwroot’ is dictated by the system settings

Launch “Information Services Manager” (Figure 16) and expand the tree until the “Role Assignment” folder is displayed. Click on the “Role Assignment” folder to display the “Role Assignment Home” window (Figure 17). If the dialog box in Figure 18 is displayed, select “Yes”.

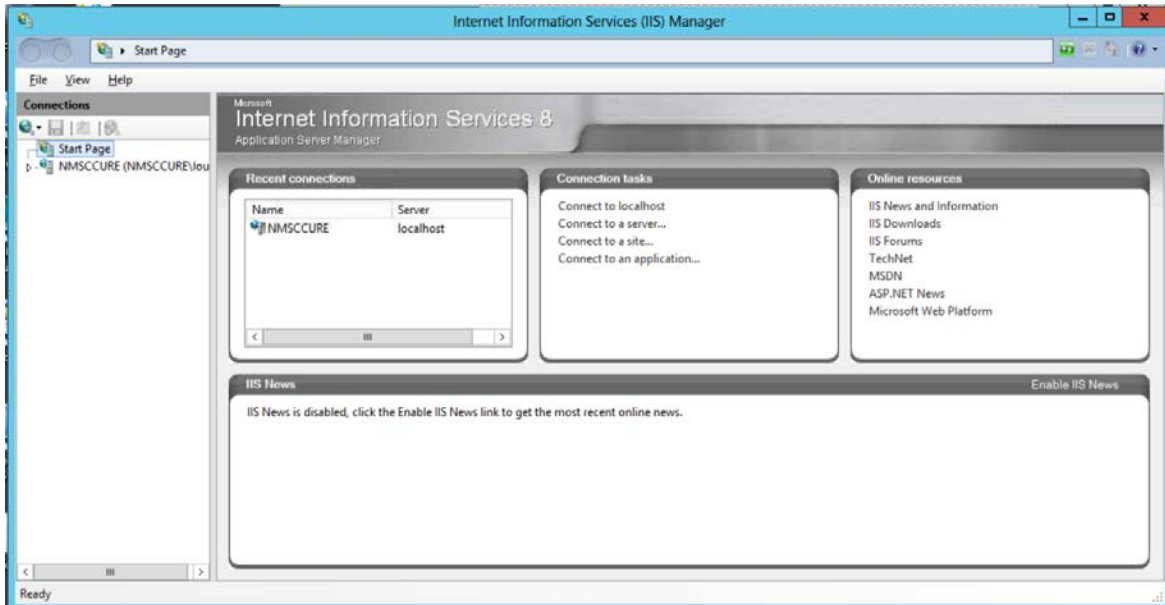


Figure 16

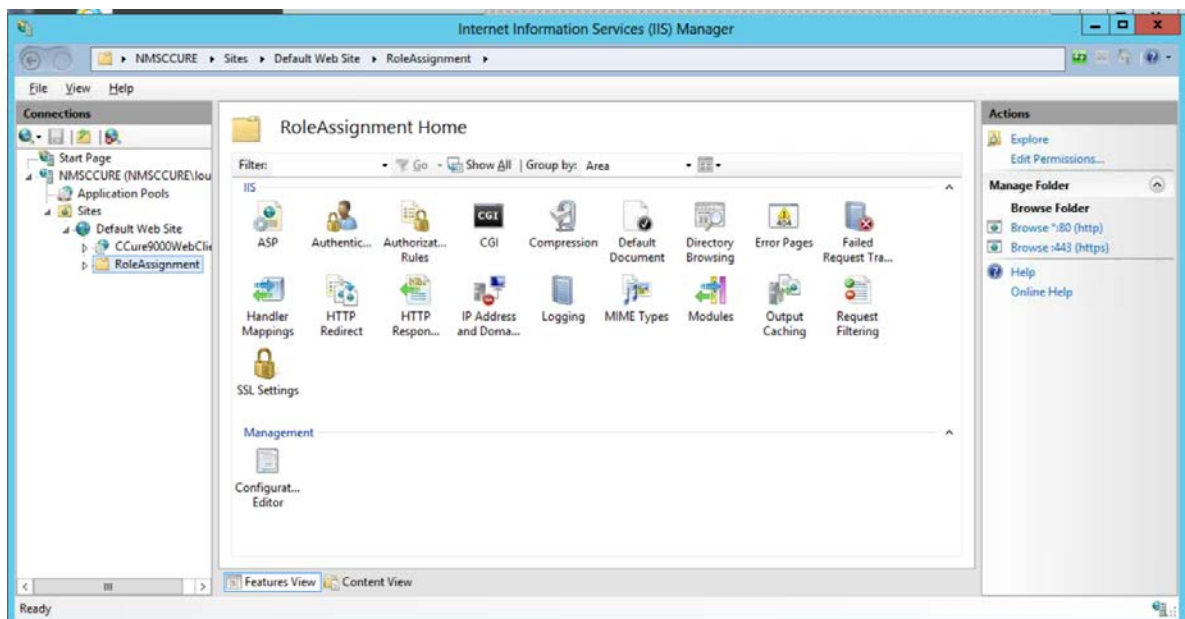


Figure 17

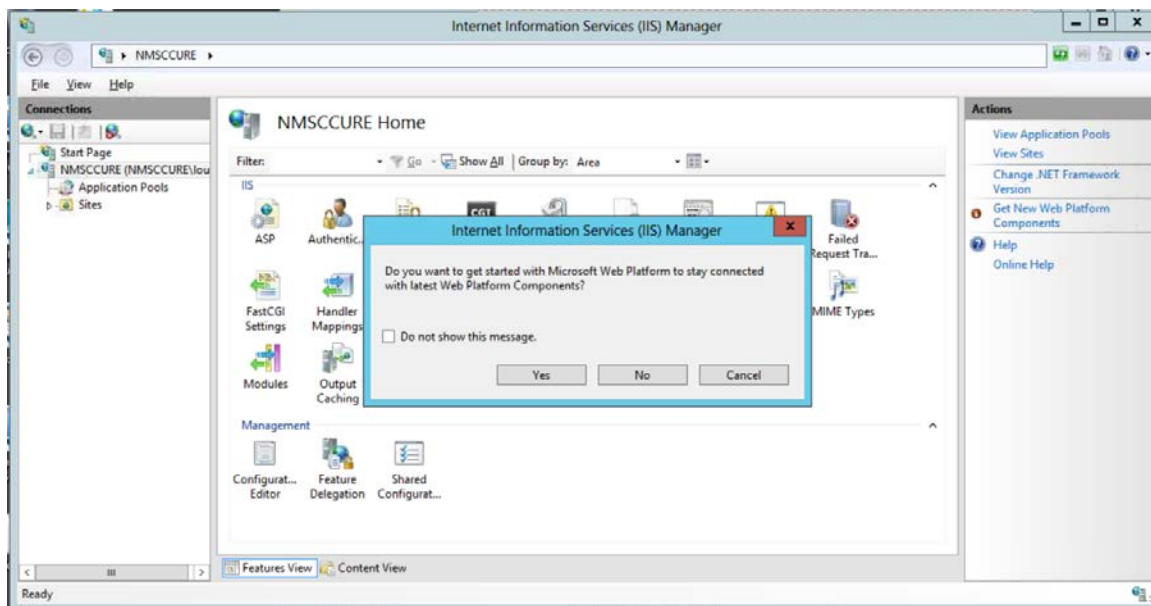


Figure 18

Right click on the "Role Assignment" folder and select "Convert to Application" as shown in Figure 19.

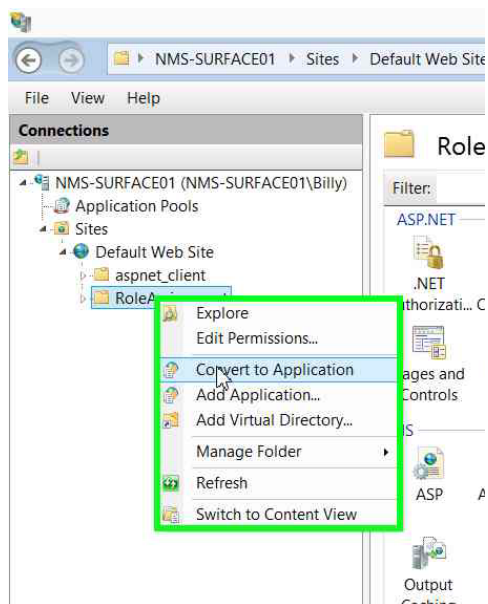


Figure 19

When the dialog box in Figure 20 is displayed, select "OK".

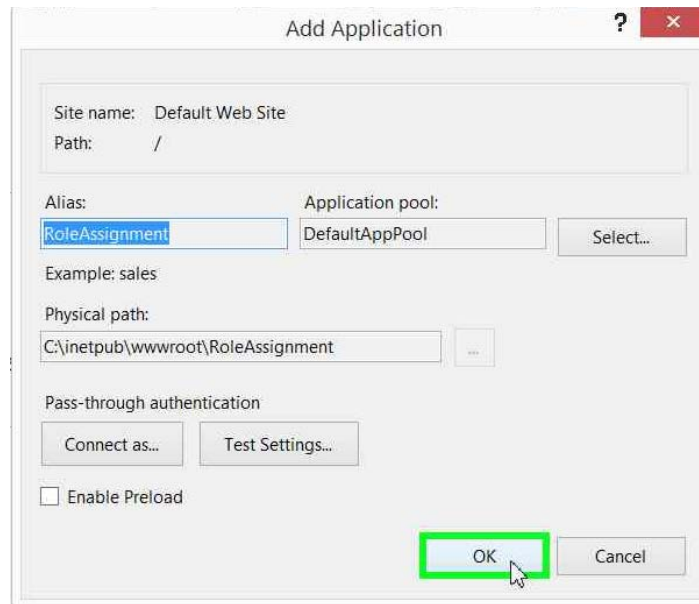


Figure 20

The "Role Assignment" folder icon will change to an application icon when complete (Figure 21).

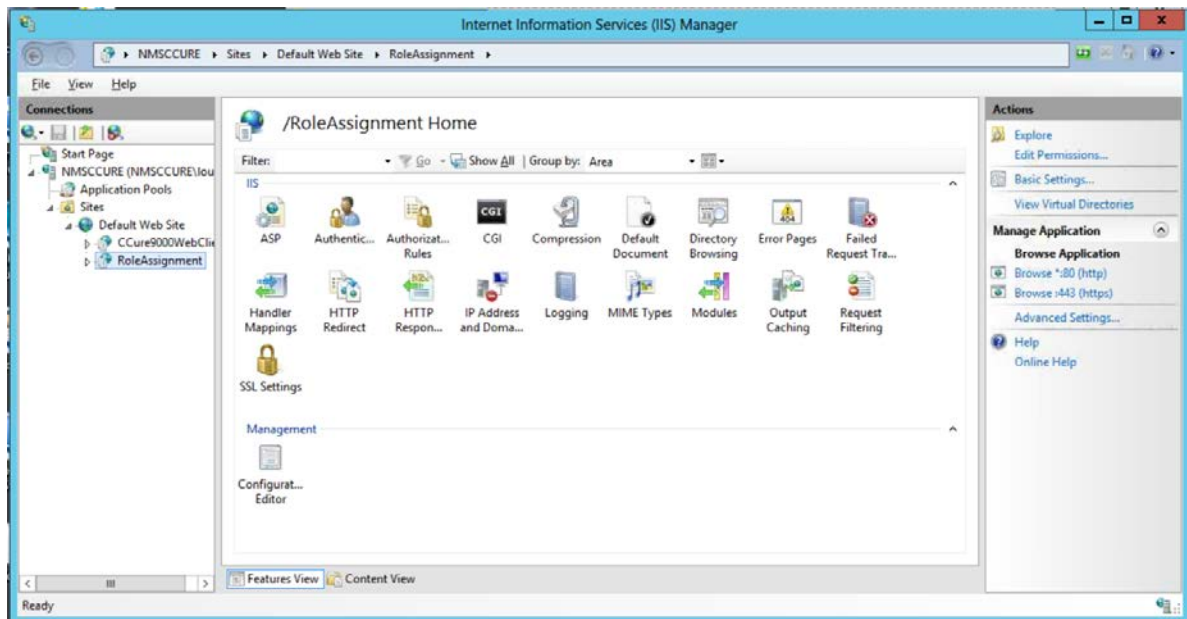


Figure 21

Exit "Internet Information Services Manager" and close the "wwwroot" window.

4. Installing the Role Assignment Application on the C•CURE Server

In the “Client” window, click on “Role Assignment Server” to display the window shown in Figure 22.

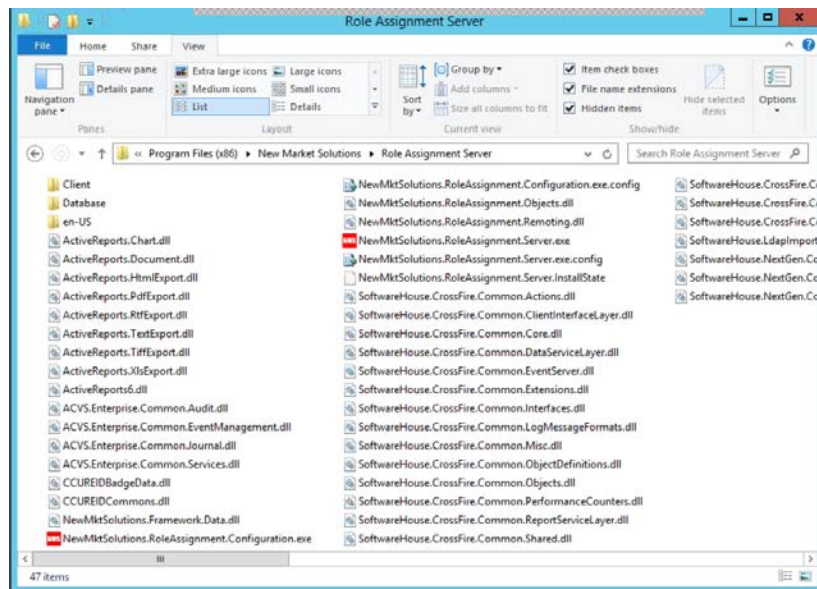


Figure 22

Right click on “NewMktSolutions.RoleAssignment.Configuration.exe.config” (Figure 23) and open with “Notepad” (Figure 24) to display the window shown in Figure 25.

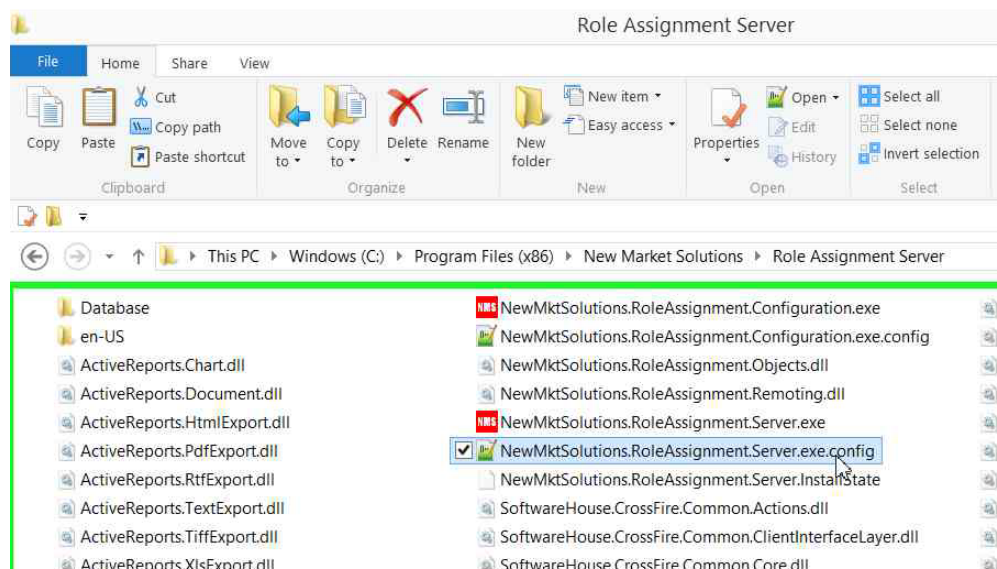


Figure 23

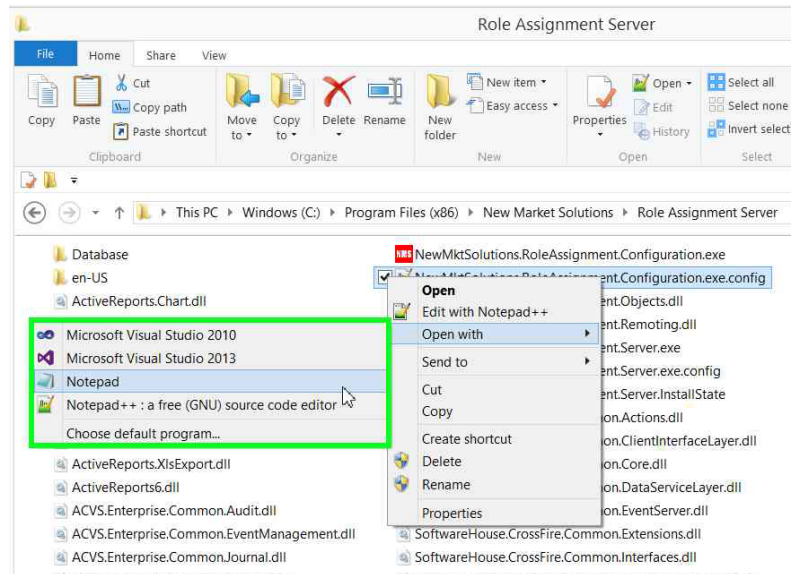


Figure 24

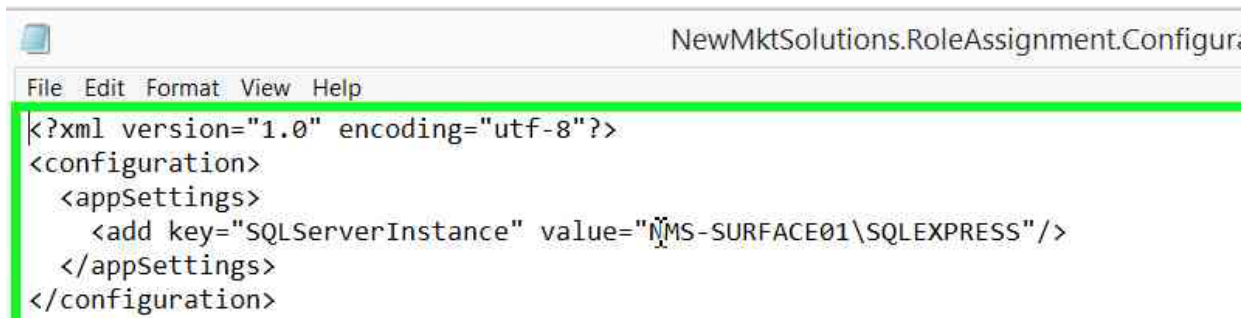


Figure 25

Replace the highlighted text in Figure 26 with the name of your “SQL Server Instance” where you installed the “NMS Role Assignment Database”.

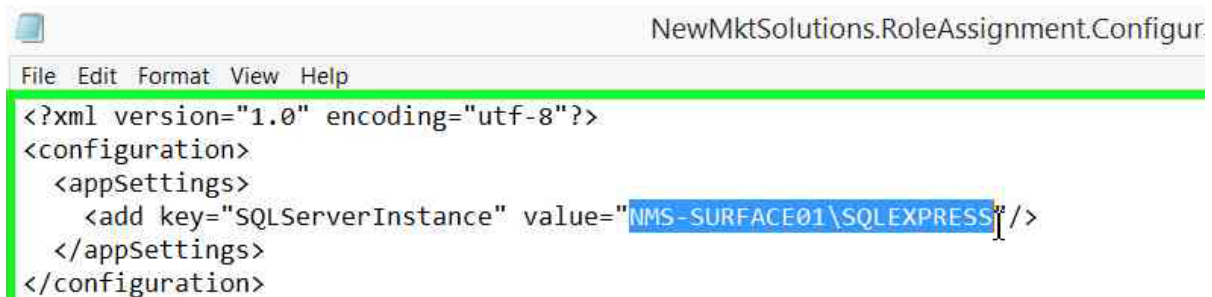


Figure 26

Exit “Notepad” and select “Save” (Figure 27).

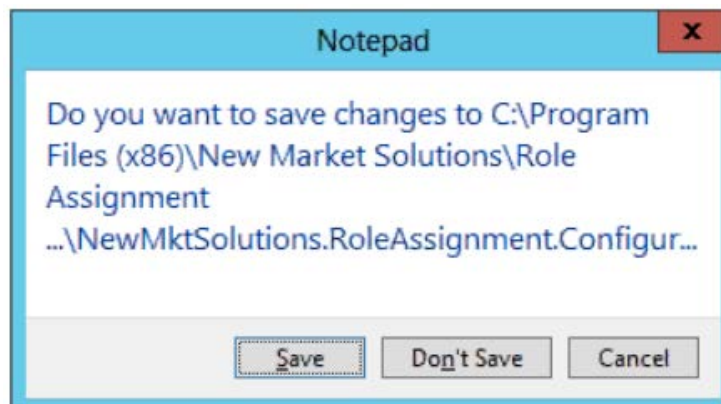


Figure 27

Right click on “NewMktSolutions.RoleAssignment.Configuration.exe.config” (Figure 28) and open with “Notepad” (Figure 29) to display the window shown in Figure 30.

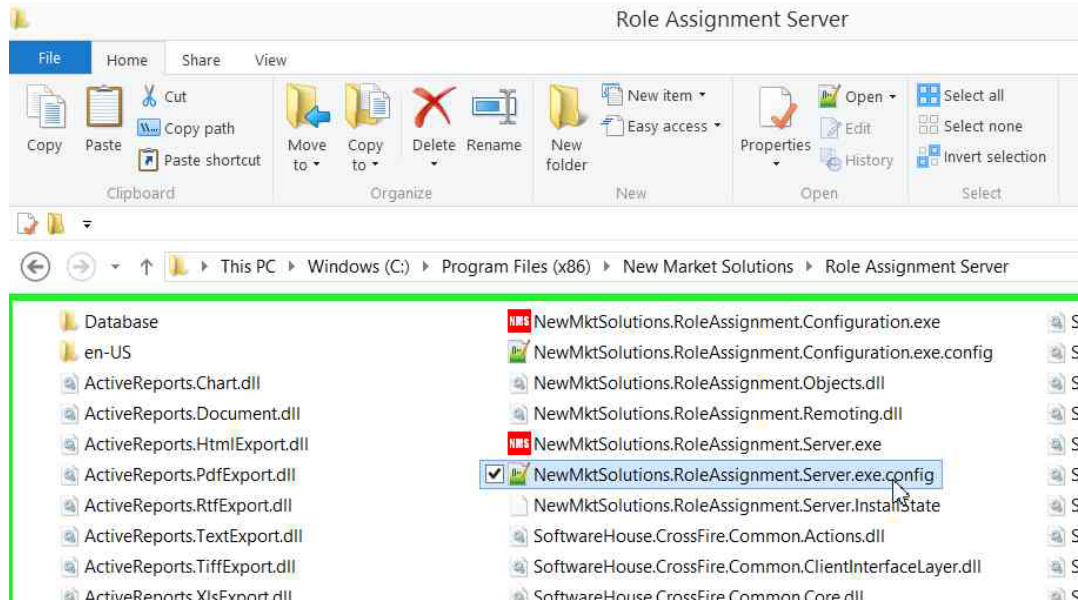


Figure 28

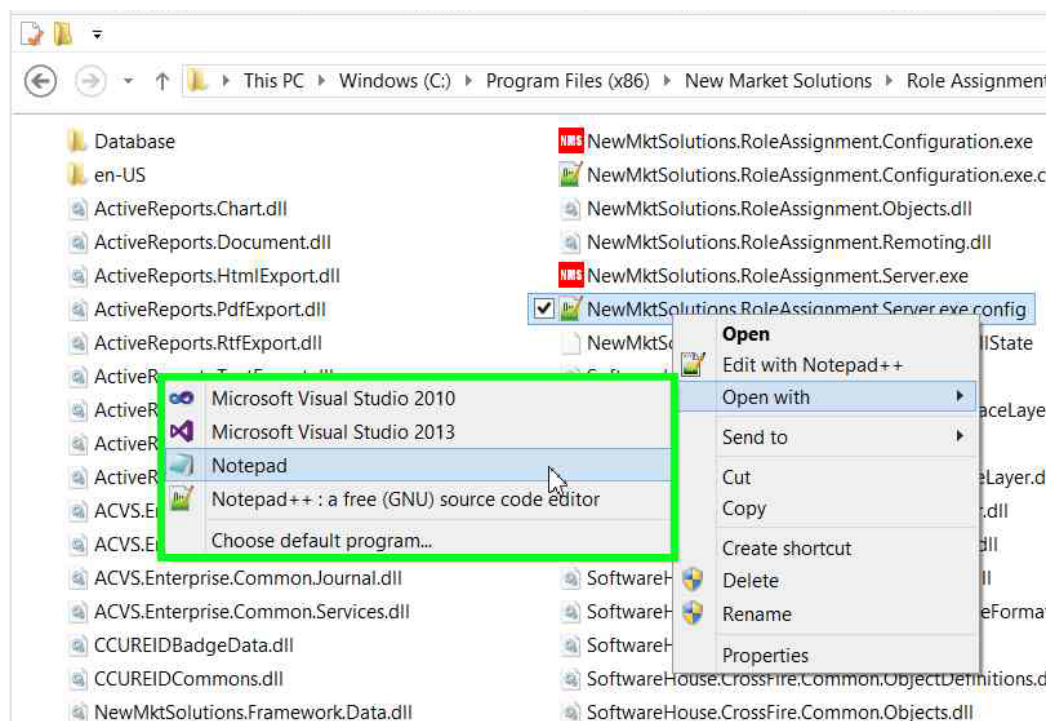


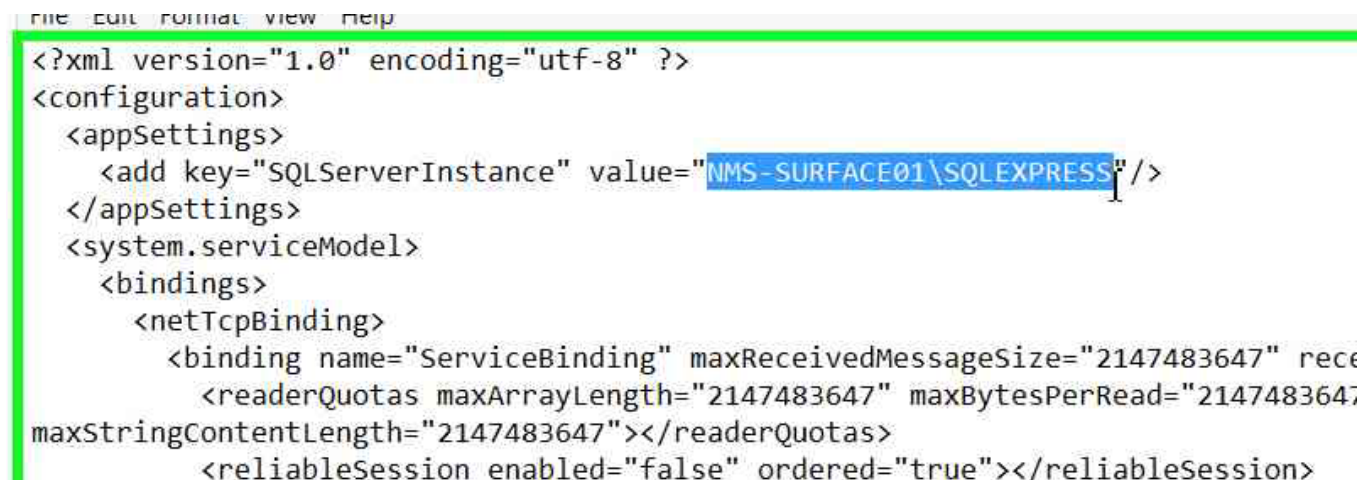
Figure 29



```
<?xml version="1.0" encoding="utf-8" ?>
<configuration>
  <appSettings>
    <add key="SQLServerInstance" value="NMS-SURFACE01\SQLEXPRESS"/>
  </appSettings>
  <system.serviceModel>
    <bindings>
      <netTcpBinding>
        <binding name="ServiceBinding" maxReceivedMessageSize="2147483647" receiveTimeout="24.0:00:00" sendTimeout="0.0:20:00">
          <readerQuotas maxArrayLength="2147483647" maxBytesPerRead="2147483647" maxDepth="2147483647" maxNameTableCharCount="2147483647"
maxStringLength="2147483647"/></readerQuotas>
          <reliableSession enabled="false" ordered="true"/></reliableSession>
        </binding>
        <binding name="StreamBinding" maxReceivedMessageSize="2147483647" receiveTimeout="24.0:00:00" sendTimeout="24.0:00:00"
transferMode="Streamed">
          <readerQuotas maxArrayLength="2147483647" maxBytesPerRead="2147483647" maxDepth="2147483647" maxNameTableCharCount="2147483647"
maxStringLength="2147483647"/></readerQuotas>
          <reliableSession enabled="false" ordered="true" inactivityTimeout="0.0:02:00"/></reliableSession>
        </binding>
      </netTcpBinding>
    </bindings>
    <client>
      <endpoint name="ClientSession" address="net.tcp://NMS-SURFACE01:8999/CrossFire/IClientSession" binding="netTcpBinding"
bindingConfiguration="ServiceBinding" contract="SoftwareHouse.CrossFire.Common.ClientInterfaceLayer.IClientSession"/></endpoint>
      <endpoint name="ClientStream" address="net.tcp://NMS-SURFACE01:8997/CrossFire/IClientStream" binding="netTcpBinding"
bindingConfiguration="StreamBinding" contract="SoftwareHouse.CrossFire.Common.ClientInterfaceLayer.IClientStream"/></endpoint>
    </client>
  </system.serviceModel>
</configuration>
```

Figure 30

Replace the highlighted text in Figure 31 with the name of your “SQL Server Instance” where you installed the “NMS Role Assignment Database”.



```
<?xml version="1.0" encoding="utf-8" ?>
<configuration>
  <appSettings>
    <add key="SQLServerInstance" value="NMS-SURFACE01\SQLEXPRESS"/>
  </appSettings>
  <system.serviceModel>
    <bindings>
      <netTcpBinding>
        <binding name="ServiceBinding" maxReceivedMessageSize="2147483647" receiveTimeout="24.0:00:00" sendTimeout="0.0:20:00">
          <readerQuotas maxArrayLength="2147483647" maxBytesPerRead="2147483647" maxDepth="2147483647" maxNameTableCharCount="2147483647"
maxStringLength="2147483647"/></readerQuotas>
          <reliableSession enabled="false" ordered="true"/></reliableSession>
        </binding>
        <binding name="StreamBinding" maxReceivedMessageSize="2147483647" receiveTimeout="24.0:00:00" sendTimeout="24.0:00:00"
transferMode="Streamed">
          <readerQuotas maxArrayLength="2147483647" maxBytesPerRead="2147483647" maxDepth="2147483647" maxNameTableCharCount="2147483647"
maxStringLength="2147483647"/></readerQuotas>
          <reliableSession enabled="false" ordered="true" inactivityTimeout="0.0:02:00"/></reliableSession>
        </binding>
      </netTcpBinding>
    </bindings>
    <client>
      <endpoint name="ClientSession" address="net.tcp://NMS-SURFACE01:8999/CrossFire/IClientSession" binding="netTcpBinding"
bindingConfiguration="ServiceBinding" contract="SoftwareHouse.CrossFire.Common.ClientInterfaceLayer.IClientSession"/></endpoint>
      <endpoint name="ClientStream" address="net.tcp://NMS-SURFACE01:8997/CrossFire/IClientStream" binding="netTcpBinding"
bindingConfiguration="StreamBinding" contract="SoftwareHouse.CrossFire.Common.ClientInterfaceLayer.IClientStream"/></endpoint>
    </client>
  </system.serviceModel>
</configuration>
```

Figure 31

Replace the highlighted text in Figure 32 with the name of your “C•CURE Server”.

```
</bindings>
<client>
  <endpoint name="ClientSession" address="net.tcp://NMS-SURFACE01:8999/CrossFire/IClientSession" binding="netTcpBinding"
bindingConfiguration="ServiceBinding" contract="SoftwareHouse.CrossFire.Common.ClientInterfaceLayer.IClientSession"></endpoint>
  <endpoint name="ClientStream" address="net.tcp://NMS-SURFACE01:8997/CrossFire/IClientStream" binding="netTcpBinding"
bindingConfiguration="StreamBinding" contract="SoftwareHouse.CrossFire.Common.ClientInterfaceLayer.IClientStream"></endpoint>
</client>
</system.serviceModel>
</configuration>
```

Figure 32

Replace the highlighted text in Figure 33 with the name of your “C•CURE Server”.

```
</bindings>
<client>
  <endpoint name="ClientSession" address="net.tcp://NMS-SURFACE01:8999/CrossFire/IClientSession" binding="netTcpBinding"
bindingConfiguration="ServiceBinding" contract="SoftwareHouse.CrossFire.Common.ClientInterfaceLayer.IClientSession"></endpoint>
  <endpoint name="ClientStream" address="net.tcp://NMS-SURFACE01:8997/CrossFire/IClientStream" binding="netTcpBinding"
bindingConfiguration="StreamBinding" contract="SoftwareHouse.CrossFire.Common.ClientInterfaceLayer.IClientStream"></endpoint>
</client>
</system.serviceModel>
</configuration>
```

Figure 33

Exit “Notepad” and select “Save” (Figure 34).

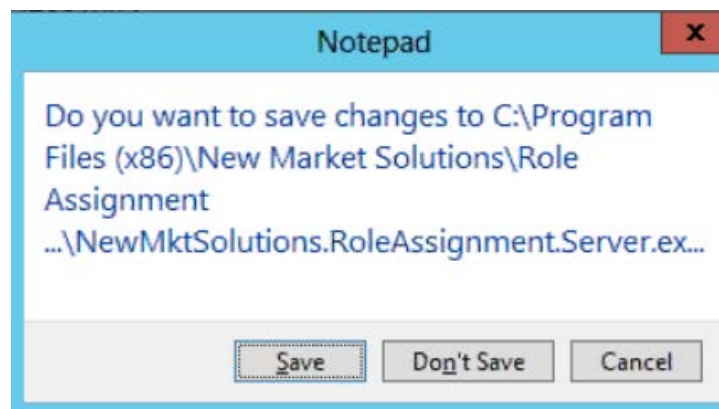


Figure 34

Open “Windows Services” and navigate to “NMS Role Assignment Service” (Figure 35).

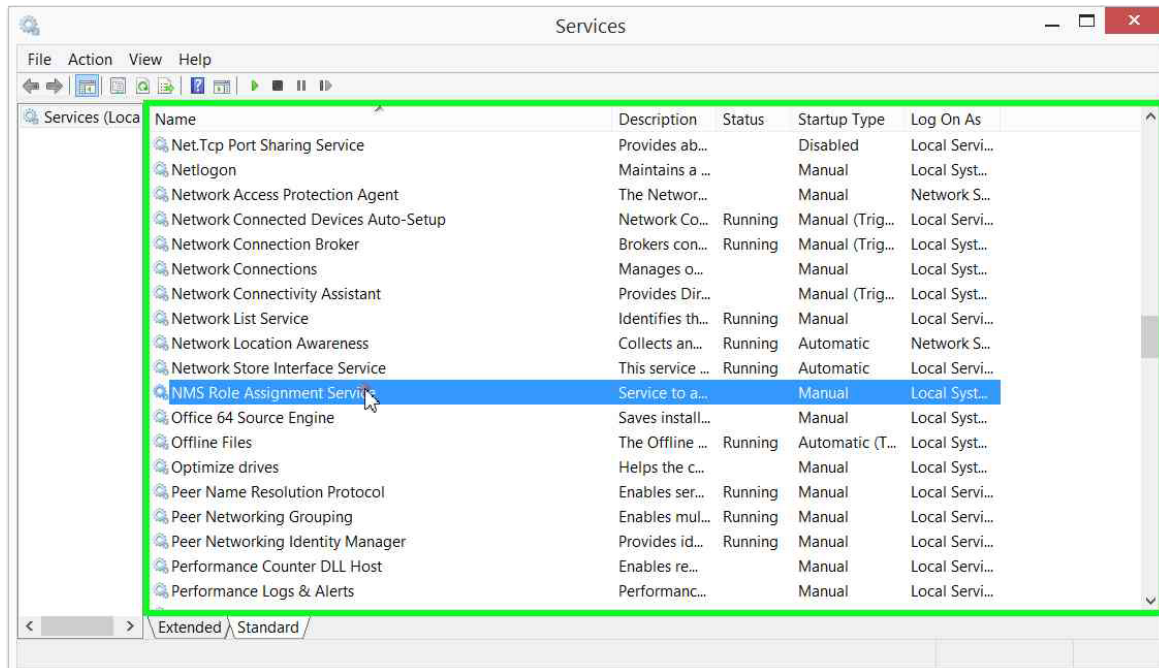


Figure 35

Right click on “NMS Role Assignment Service” and select “Properties” as shown in Figure 36.

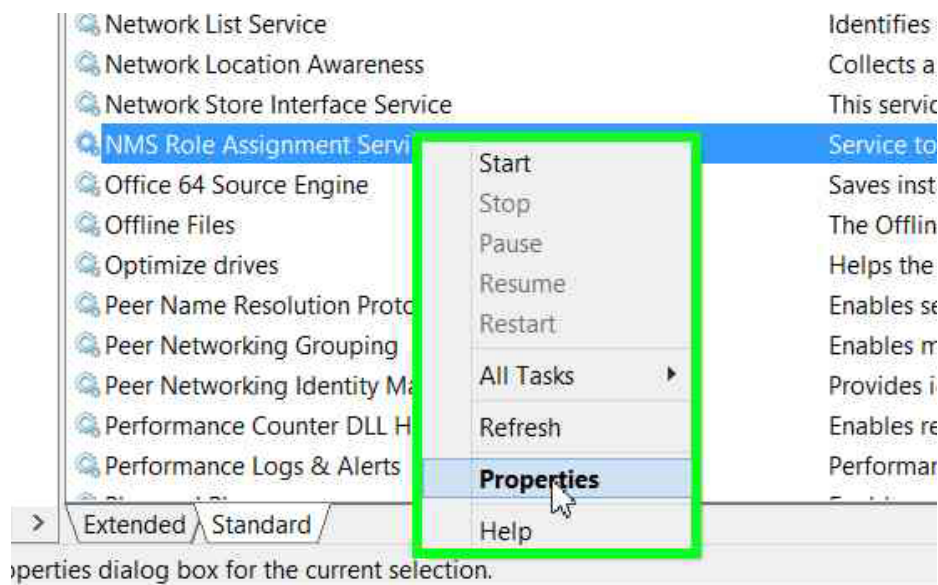


Figure 36

Select the “Log On” tab, then select “OK” (Figure 37).

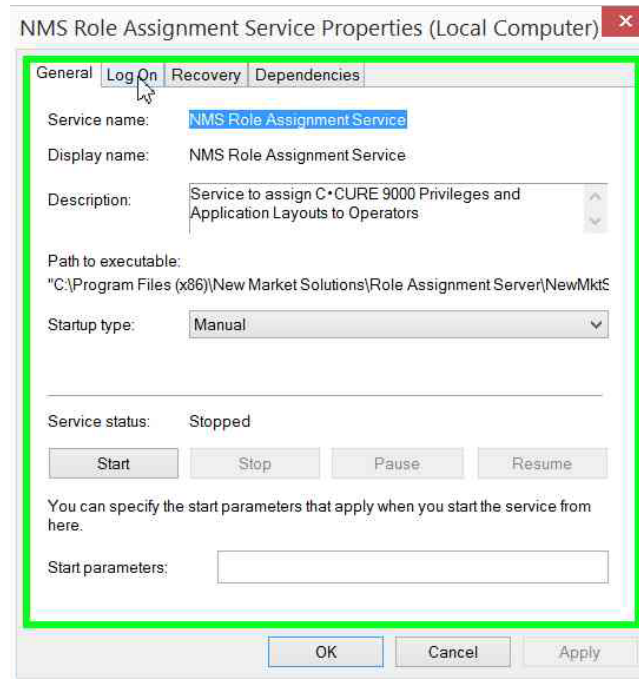


Figure 37

Enter an account that has the rights to run the “NMS Role Assignment Service,” then enter “Password”, “Confirm password” and select “OK”(“ Figure 38).

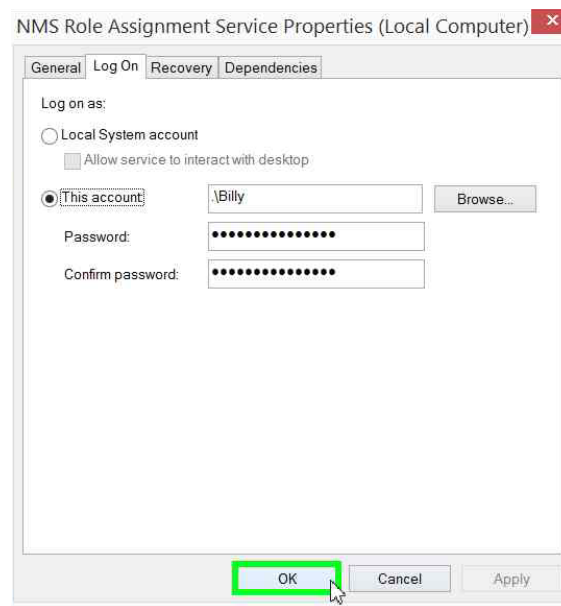


Figure 38

Right click on the “NMS Role Assignment Service” and select “Start” (Figure 39).

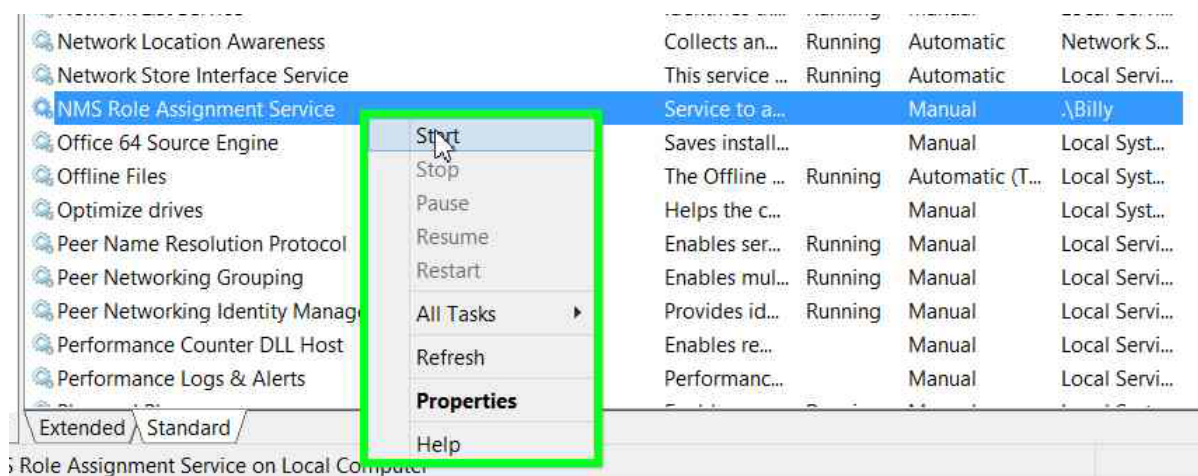


Figure 39

Verify status of “NMS Role Assignment Service” changes to “Running” (Figure 40).

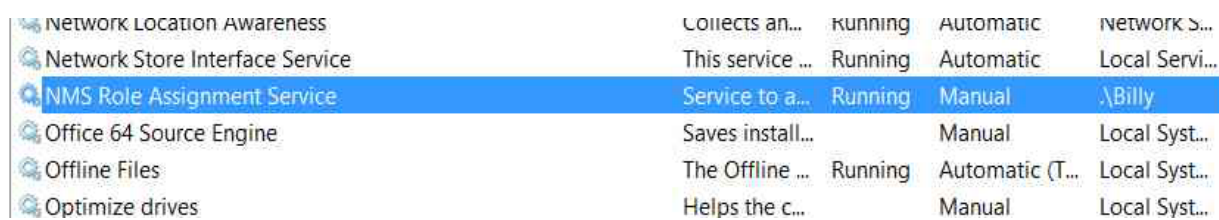


Figure 40

Go to C•CURE “Monitoring Client” to verify the “NMS Role Assignment Service” has started and is logged onto C•CURE. Click the “Operator” tab as shown in Figure 41.

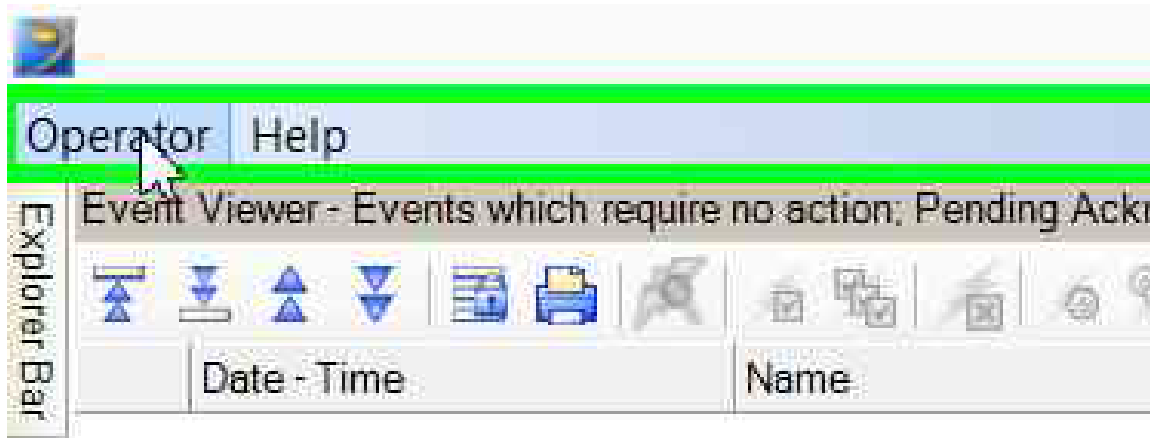


Figure 41

Select “Online Operators” (Figure 42).

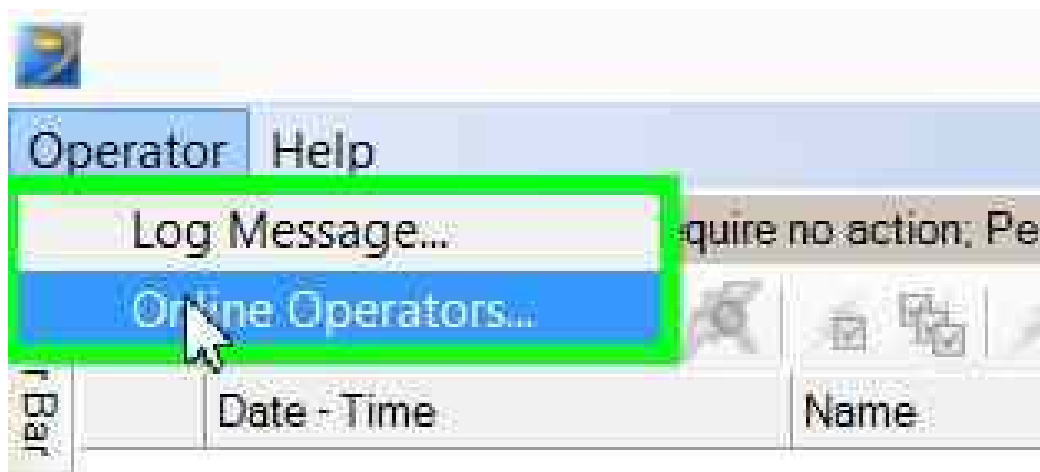


Figure 42

If the “NMS Role Assignment Service” has started, it will appear in the “Online Operators” window. (Figure 43). Exit the C•CURE “Monitoring Station Client.”

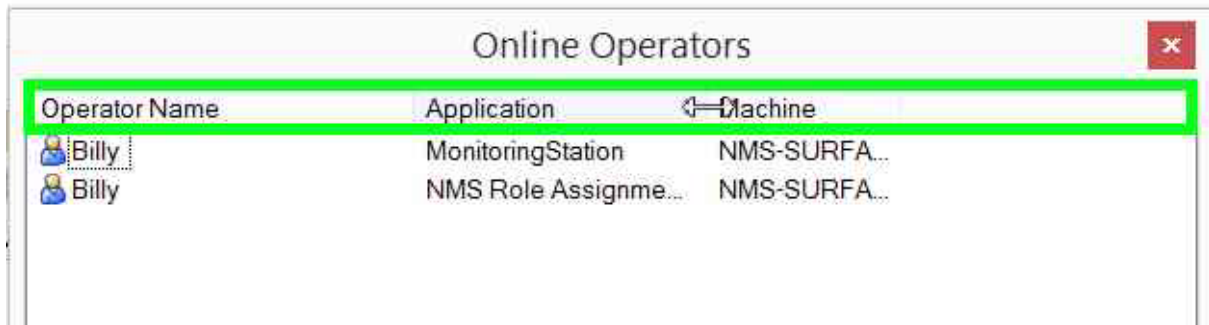


Figure 43

5. Creating and Removing a Role

A Role is a combination of privileges and application layouts authorized for one or more operators.

To create a Role, navigate to the “Role Assignment Server” on the C•CURE Server. Double click on “NewMktSolutions.RoleAssignment.Configuration.exe” (Figure 44) to display the “Role” window shown in Figure 45.

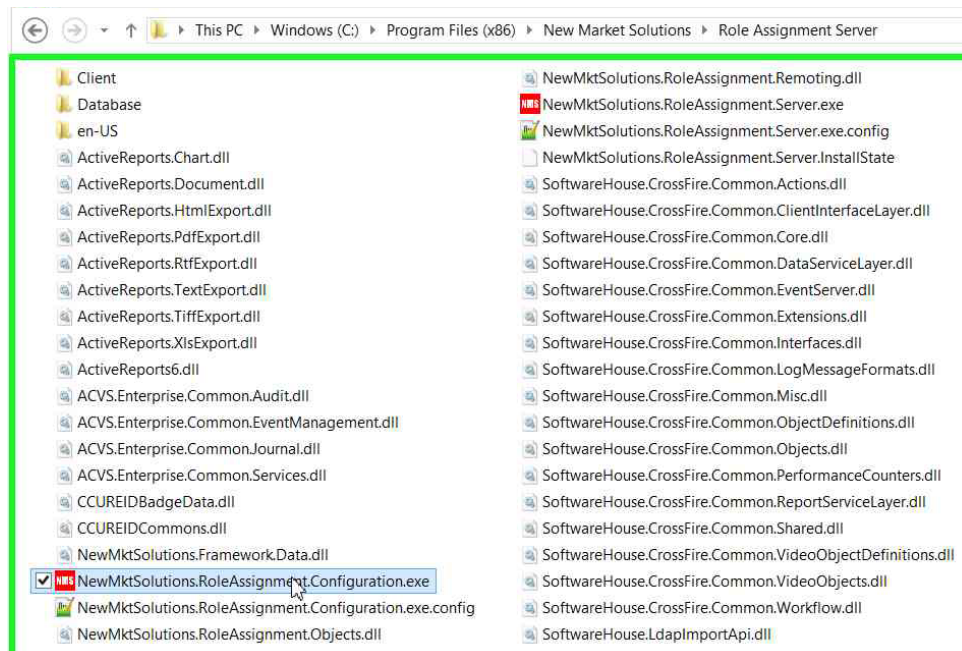


Figure 44

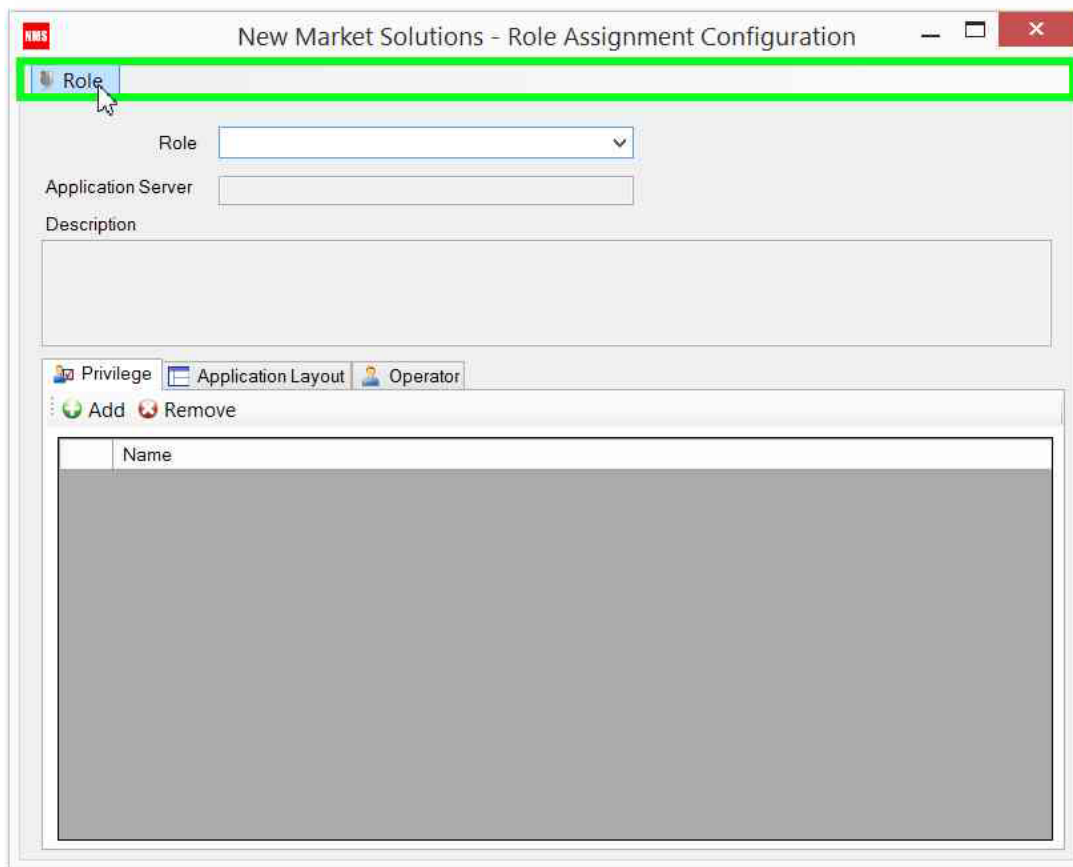


Figure 45

Click on the “Role” tab and select “Add” (Figure 46) to display the window shown in Figure 47. Note: To delete a Role, select “Remove.” From the dropdown list, select the Role to be deleted, then select “OK”.

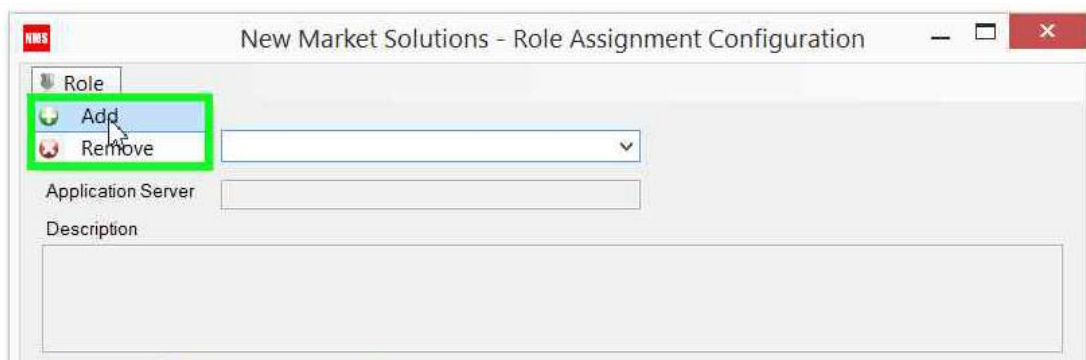


Figure 46

Enter the “Role” name and a “Description” if desired. Select the C•CURE “Application Server” that this Role applies to, then select “OK”.

Figure 47

To assign privileges to the Role, select the “Privilege” tab, then select “Add” (Figure 48) to display a list of “Available Privileges” (Figure 49). Any privileges configured on the “C•CURE Server” will show up on the list.

Figure 48

Click on the desired privileges, then select “OK” (Figure 49).

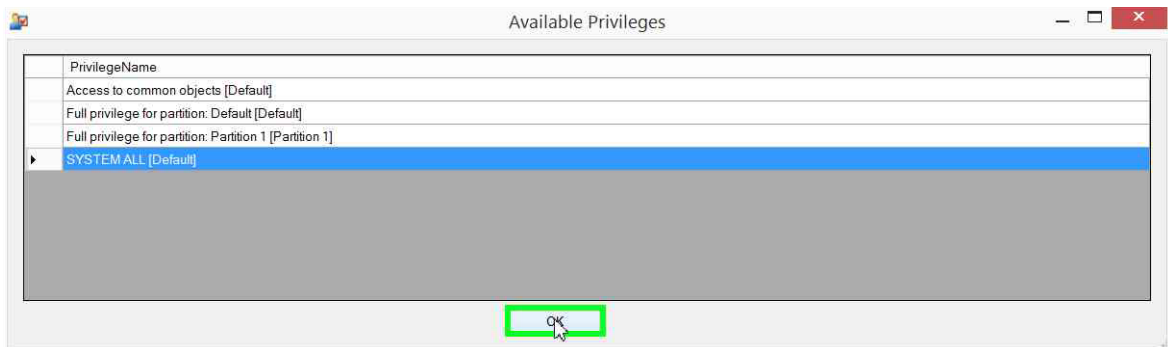


Figure 49

To assign application layouts to the Role, select the “Application Layout” tab, then select “Add” (Figure 50) to display a list of “Available Application Layouts” (Figure 51). Any application layouts configured on the “C•CURE Server” will show up on the list.

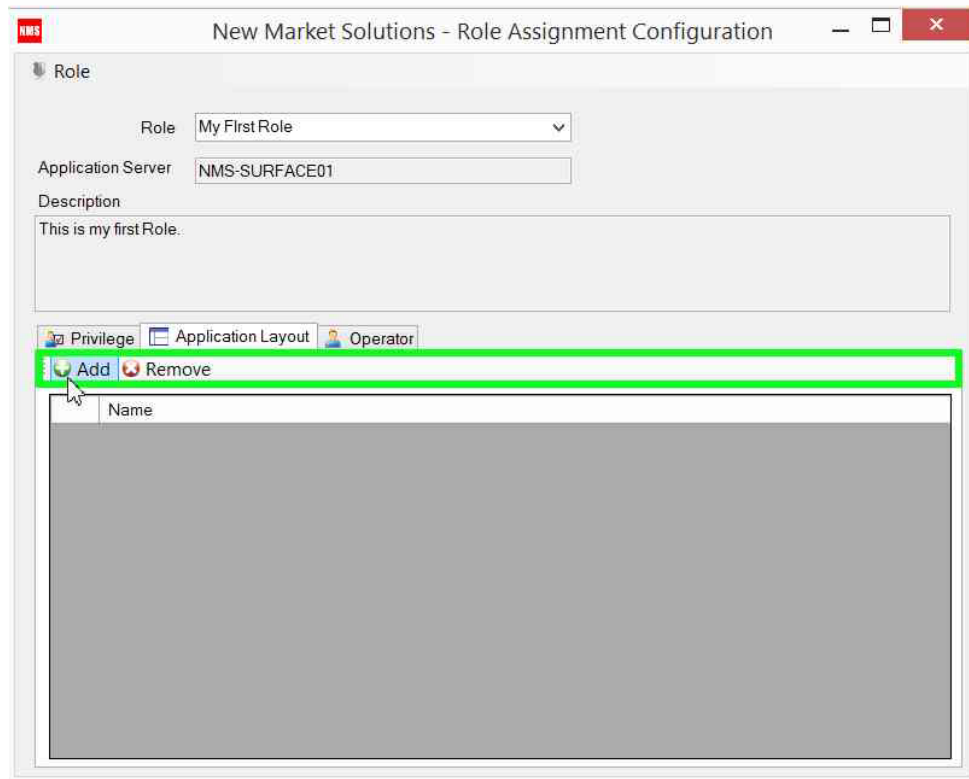


Figure 50

Click on the desired application layouts, then select “OK” (Figure 51).

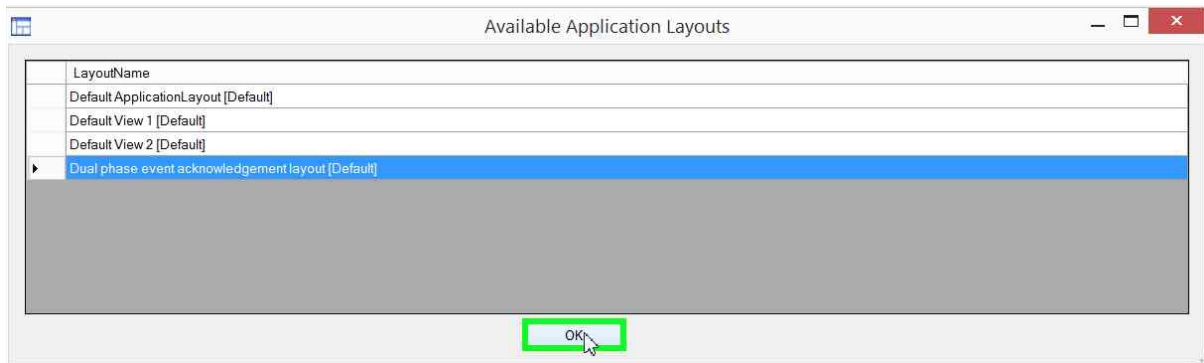


Figure 51

To assign operators to the Role, select the “Operator” tab, then select “Add” (Figure 52) to display a list of “Available Operators” (Figure 53). Any operator configured on the “C•CURE Server” will show up on the list.

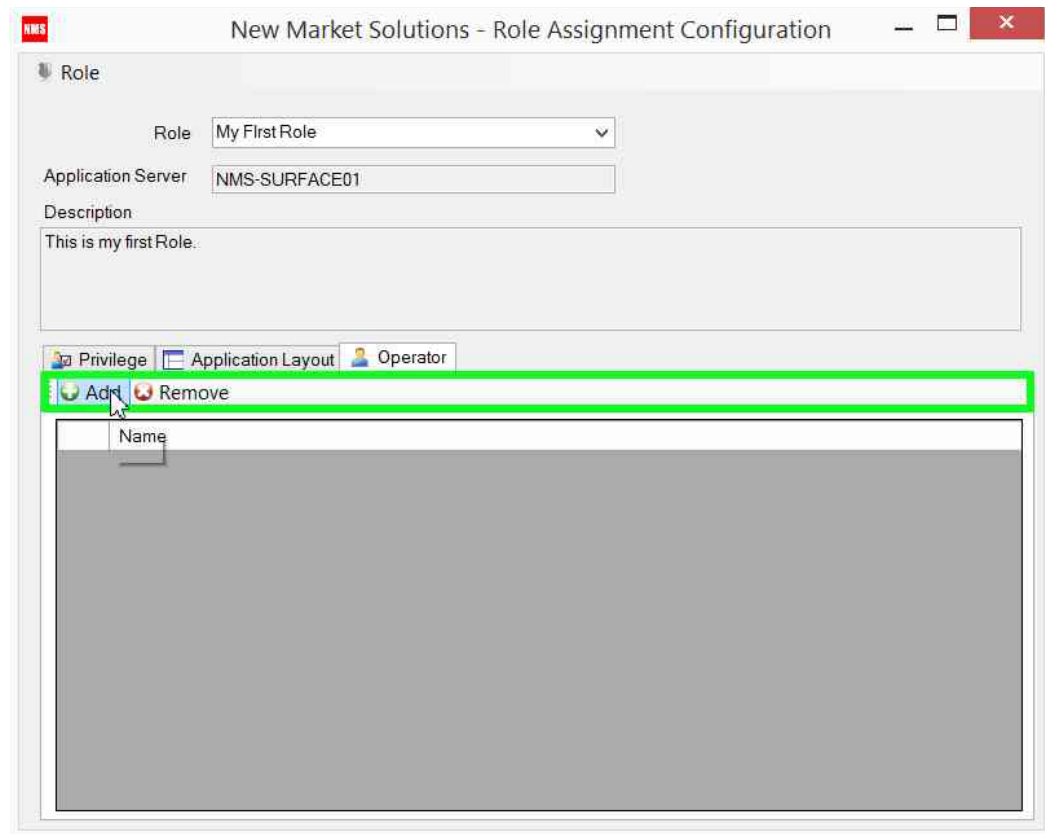


Figure 52

Click on the desired operators, then select “OK” (Figure 53).



Figure 53

Repeat the above steps for as many Roles as you need to create.

6. Installing the Role Assignment Service on a C•CURE Client Workstation

Log on to the Client Workstation with the following rights:

- Ability to download and install application.
- Read/Write access to “\Program Files (x86)\ Tyco\CCURE Client Directory.

Start “Internet Explorer” and navigate to the website of the “C•CURE Server” where the “NMS Role Application Server” is installed. Open your web browser to display the “NMS Role Assignment Client” window shown in Figure 54, then select “Install.”

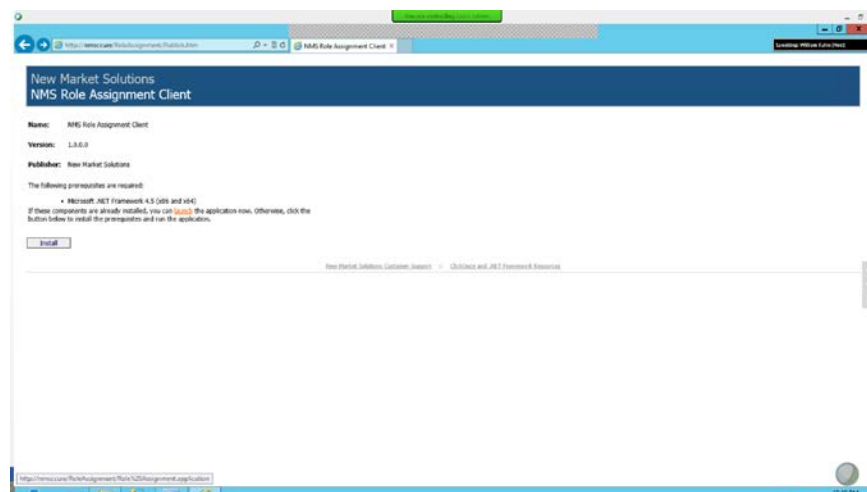


Figure 54

When the window in Figure 55 is displayed, select “Run”.



Figure 55

When the window in Figure 56 is displayed, select “Install”.

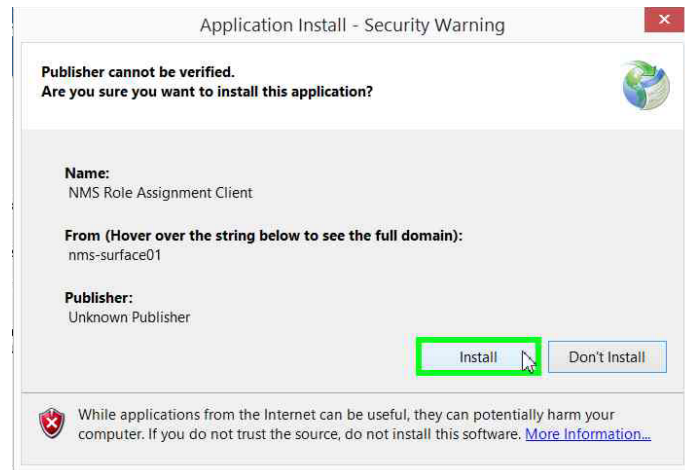


Figure 56

After the installation is complete, the “Role Assignment” dialog box will be displayed (Figure 57). Close the web browser.



Figure 57

7. Selecting a Role When Logging onto a C•CURE Client Workstation

After logging onto a “C•CURE Client Workstation” with your Windows password, double click on the “NMS Role Assignment Client” icon (Figure 58) on the desktop to display the “Role Assignment” dialog box (Figure 59).



Figure 58

In the “Available Roles” dropdown box, select one of the roles that has been assigned to you.



Figure 59

Select “Apply Role” (Figure 60).



Figure 60

When the dialog box in Figure 61 is displayed, select “OK” to display the dialog box in Figure 62.



Figure 61

Select “Launch C•CURE Monitoring Client” or “Launch C•CURE Administration Client”, as appropriate.



Figure 62

NMS

NEW MARKET SOLUTIONS

New Market Solutions

123 Butler Ave

Wakefield, MA 01880

www.newmkt solutions.com
