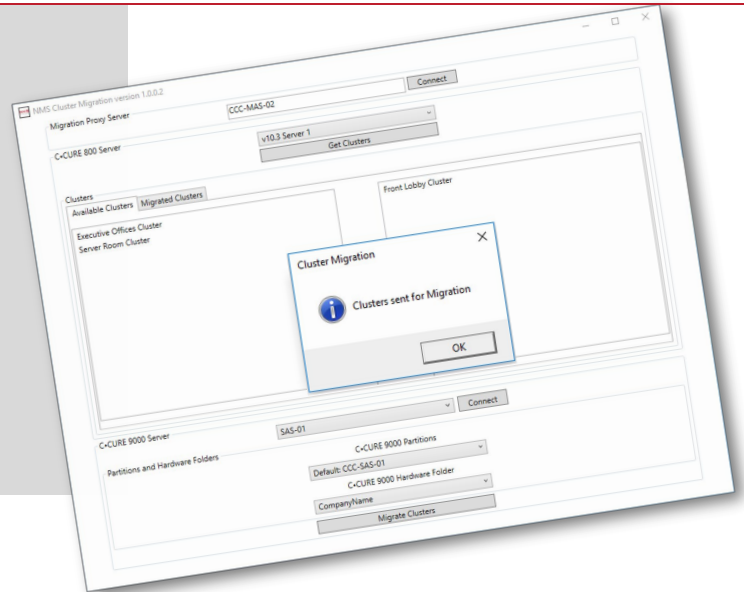


CLUSTER MIGRATION UTILITY FROM C·CURE 800 TO C·CURE 9000

The NMS Cluster Migration utility makes it easy to migrate from C·CURE 800 to C·CURE 9000 at your own pace – one cluster at a time or multiple clusters at once, all while ensuring the integrity of your data and system architecture.



- Works with multiple enterprise and standalone servers simultaneously
- One cluster at a time or multiple clusters at once
- Use any version combinations of C·CURE 800 10.x and C·CURE 9000 2.6 and higher
- Migrate schedules, clusters and all supporting objects
- Proxy architecture streamlines SDK prerequisites
- Migration database stores lists of servers and migrated clusters

Pick Your Source, Pick Your Target, Click to Migrate

The Cluster Migration utility employs a unique proxy architecture that does all the heavy lifting to streamline the migration process. It communicates with the C·CURE 800 Progress ODBC, C·CURE 9000 SDK, and with the NMS migration database.

Cluster migration clients don't need to know anything about SQL, the C·CURE 9000 SDK, or C·CURE 800 – they simply need to communicate with the proxy, and all information is provided.

Upon initial connection, the utility reads the C·CURE 800 system variables and automatically updates those variables on the C·CURE 9000 to ensure proper synchronization and significantly reduce data entry time and errors.

Migrate Everything...At Your Pace

Whether migrating one cluster or many, the process automatically begins with C·CURE 800 schedules since they are often the root of many cluster objects. Once the schedules are built in C·CURE 9000, the clusters are built with the controllers and all supporting objects including intrusion zones, clearances, areas, elevators, events, etc.

The NMS Cluster Migration utility employs unique intelligence to monitor for any object with the same name in the target C·CURE 9000; if so, it uses that object rather than creating a new one.

If any changes are made in a cluster after it has been migrated, it is easy to re-migrate that cluster. Simply pick your source, select your target, and click 'migrate clusters'. It's an easy, behind-the-scenes process that ensures a correct and complete migration.

**FOR CUSTOMERS WHO WANT
TO MIGRATE ON THEIR OWN
TERMS**

